

# اينفكون ENVICON امارات



## امارات اينفكون

ريپوري بهر ره مهيناني نوگتي فاکسي

Mobile 00964 770 460 0062 Mobile 00964 750 460 7803 Tel 00964 (0) 66 257 0700

E-mail: [info@envicon-emirates.com](mailto:info@envicon-emirates.com) Website: [www.envicon-emirates.com](http://www.envicon-emirates.com)

## Description

**A**luFlex are extremely versatile flexible duct which suitable for all high and low velocity air-conditioning and ventilation system. It is from state of the art Japanese technology which produced both pre-insulated and non-insulated forms in a wide range from 4" ~ 20"



### Bare Duct without insulation

Size range	: 4" ~ 20" (100mm ~ 500mm)
Compress	: Up to 90%
Standard Length	: 10 Metres
Temperature Range	: -30 ~ 100°C
Steel Wire	: 1.0 ~ 1.2mm
Pressure Rating	: 250mm WG (+ve) : 25mm WG (-ve)

### Skill Required

Installation Of AluFlex can be done easily, It is consistency of the inner diameter are precise and smooth. Is tough for rough handling and yet flexible for confine space at tight corners. Therefore, only minimum skill are required to installed.

## Insulated Duct

Size range	: 4" ~ 20" (100mm ~ 500mm)
Compress	: Up to 90%
Standard Length	: 10 Metres
Temperature Range	: -30 ~ 100°C
Steel Wire	: 1.0 ~ 1.2mm
Pressure Rating	: 250mm WG (+ve) : 25mm WG (-ve)
Fibreglass Wool	: 1" 1LB or 2" 2LB



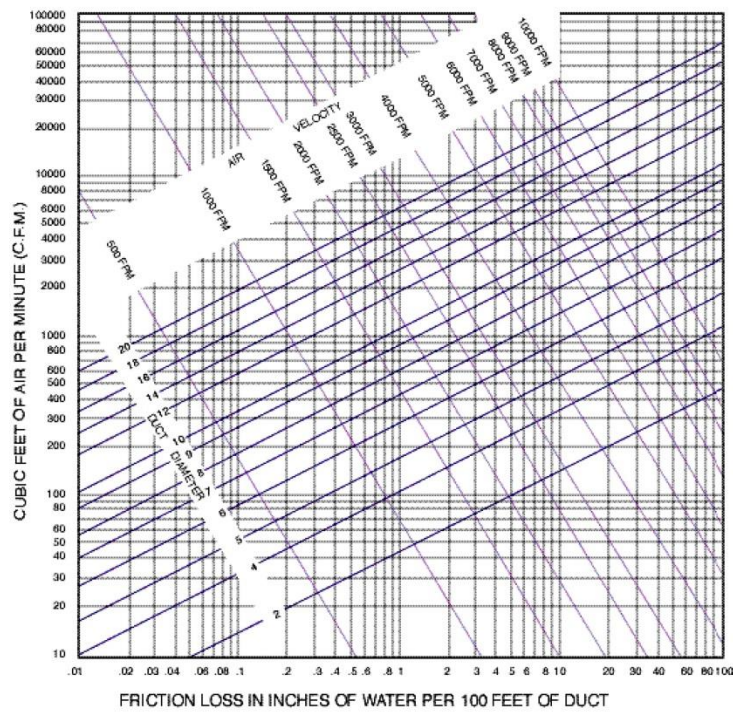
## Benefit and Features : Durable

**A**luFlex unique features include that the aluminium foil which house the insulation glasswool are reinforced with fiberglass yarn and tensile strength spiral wire that gives the AluFlex an extra edged towards harsh environment. Inner part of the duct are smooth therefore minimize air velocity lost.

### Thermal Insulation Information

Insulation Thickness	Density (Kg/m <sup>3</sup> )	R Value	Measure
25mm	16	0.7	m <sup>2</sup> K/W
25mm	32	0.76	m <sup>2</sup> K/W
50mm	32	1.5	m <sup>2</sup> K/W

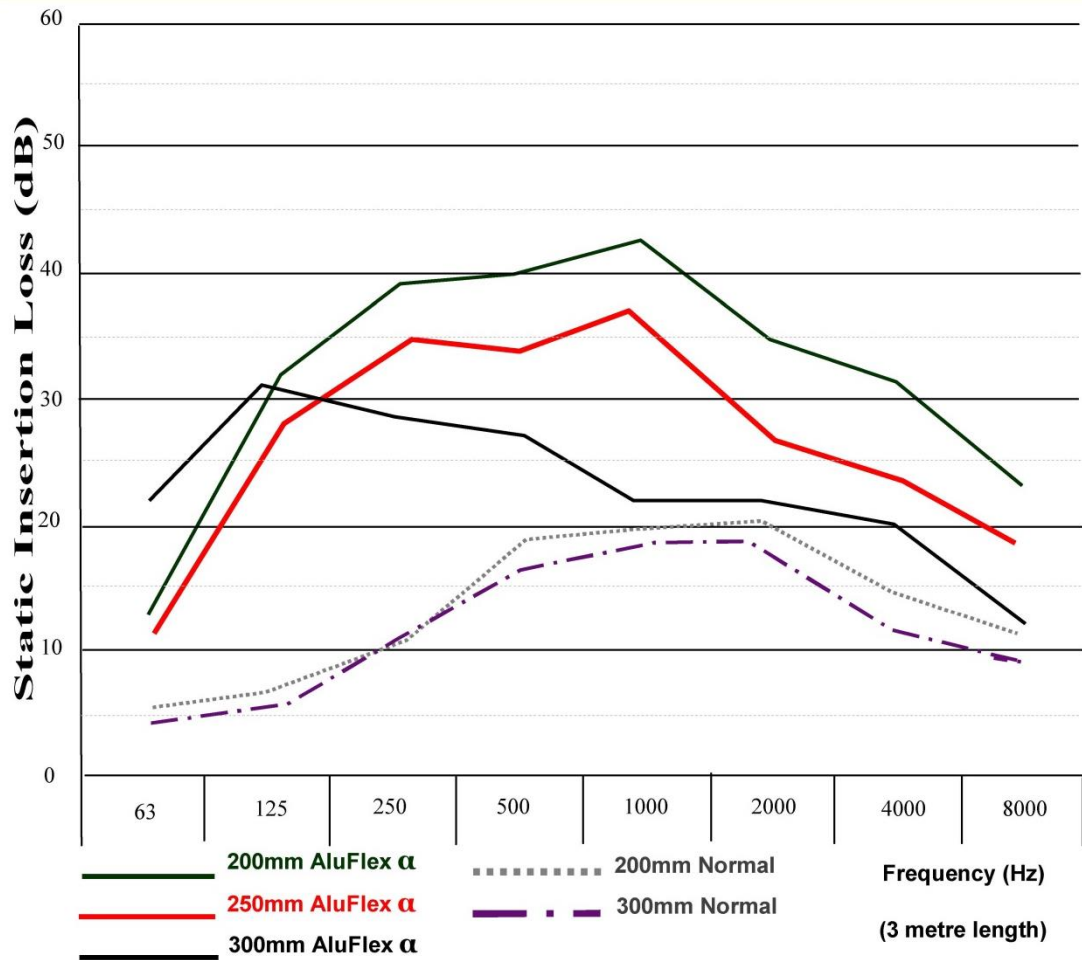
Nominal Diametre		Inner Diametre	Approx. Working Pressure Max. (kpa)	Approx. Vacuum Pressure Max. (kpa)
100(mm)	4"	105mm	<b>2.7</b>	<b>0.15</b>
150(mm)	6"	156mm		
200(mm)	8"	207mm		
250(mm)	10"	256mm		
300(mm)	12"	310mm		
350(mm)	14"	358mm		



**F**ire Rating

Complied to the index of performance of material when it exposed to the condition of the test in British Standard 476 : Part 6 : 1989 "Method of test for fire propagation for products" & the tendency of the surface of a material or a combination of material to support the spread of flame across its surface and to classify the surface according to the test given in British Standard 476 : Part 7 : 1997 when tested at TUV SUD PSB Corporation Singapore (Class 1 & 0)

## Flexible Duct Acoustical Performance



AluFlex  $\alpha$  = Aluflex flexible ducts with perforated inner core